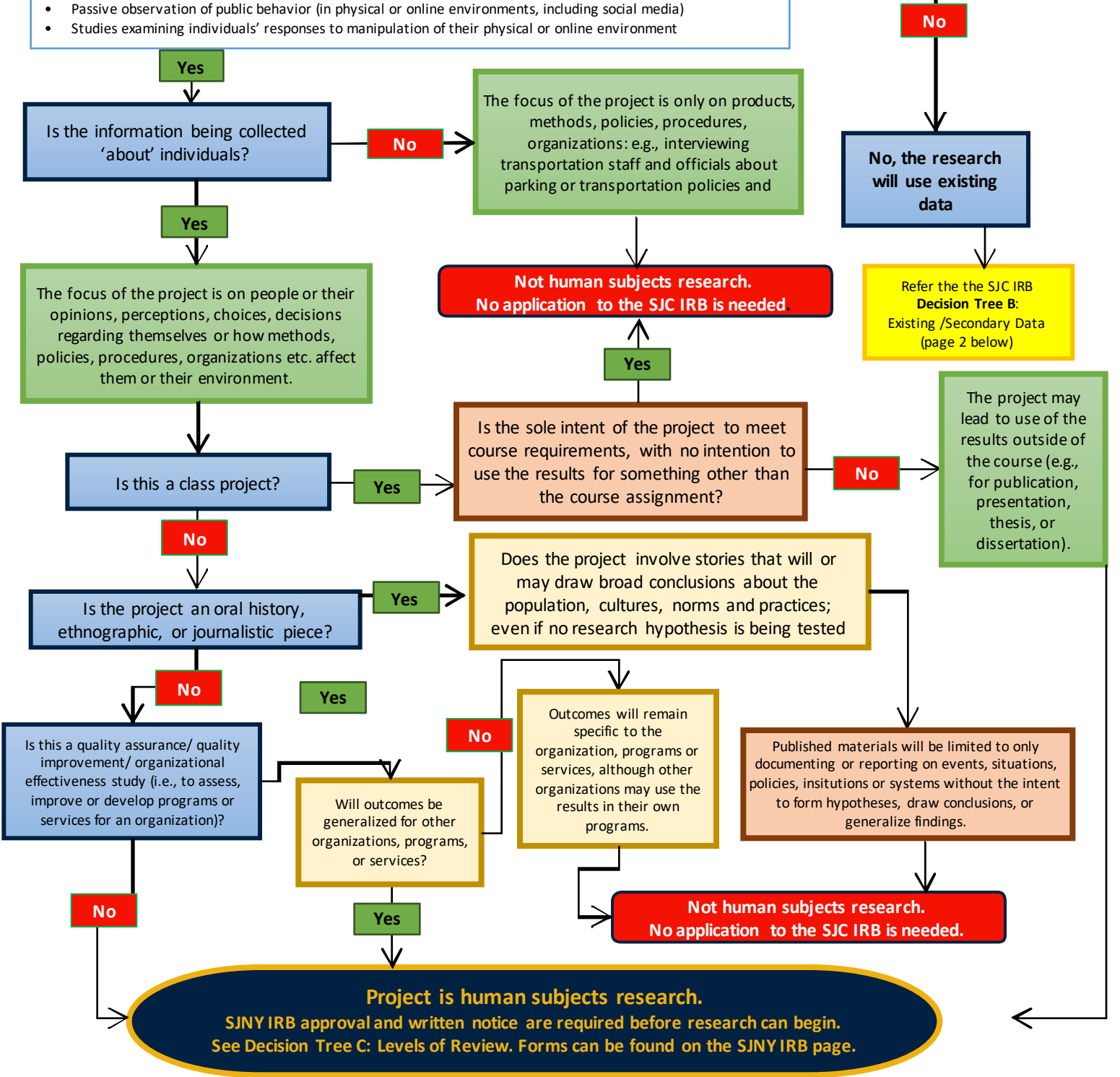


# Decision Tree A: Does Your Research Project Require an Application to the SJNY IRB?

**Will you, a member of your research team or a collaborator observe, interact with, or intervene with individuals to gather information that will be used for research?** Examples:

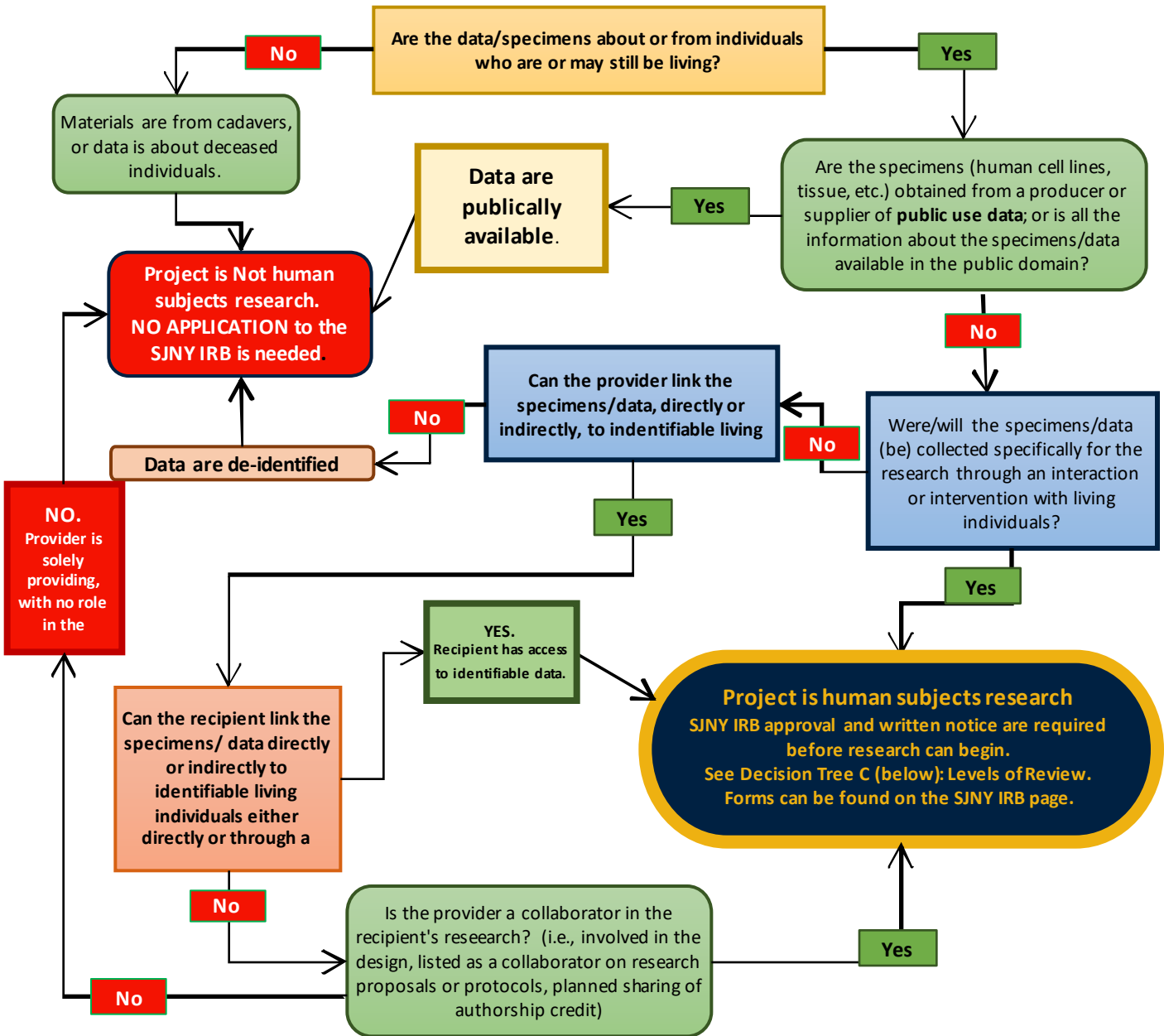
- Surveys, questionnaires, focus groups, interviews
- Games, experiments in physical or in electronic environments
- Physical or biomedical procedures – imaging, scanning, blood collection, anthropomorphic procedures
- Diet, nutrition studies, taste tests
- Studies examining effectiveness of educational tools or curricula
- Use of instruments or devices, including phones, to collect data or monitor or influence behavior
- Passive observation of public behavior (in physical or online environments, including social media)
- Studies examining individuals' responses to manipulation of their physical or online environment

**Questions?  
SJNYIRB@sjny.edu**



**Project is human subjects research.**  
 SJNY IRB approval and written notice are required before research can begin.  
 See Decision Tree C: Levels of Review. Forms can be found on the SJNY IRB page.

# Decision Tree B: Does Your Research Project Involving Secondary or Existing Data, Documents or Biomedical Specimens Require an Application to the SJNY IRB?



## Decision Tree C: Levels of Review

What level of review does your research project require?

